

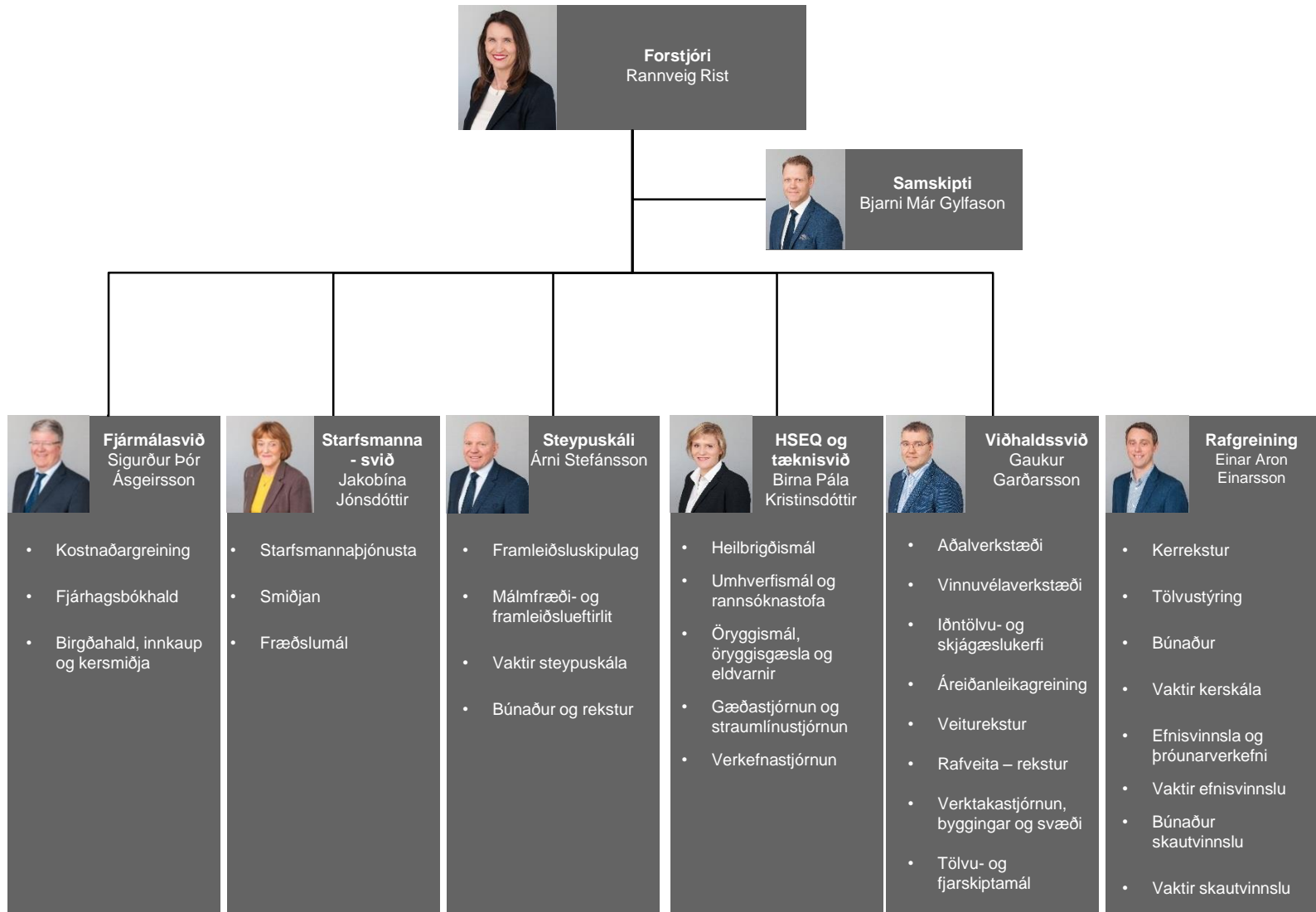
**RioTinto**

Skipurit Rio Tinto á Íslandi hf.

Gildir frá 1. júní 2019



# Skipurit Rio Tinto á Íslandi hf.



# Framkvæmdastjórn



Rannveig Rist  
Forstjóri



Sigurður Þór  
Ásgeirsson  
Fjármálasvið



Jakóbína  
Jónsdóttir  
Starfsmannasvið



Árni Stefánsson  
Steypuskáli



Birna Pála Kristinsdóttir  
HSEQ og tæknisvið

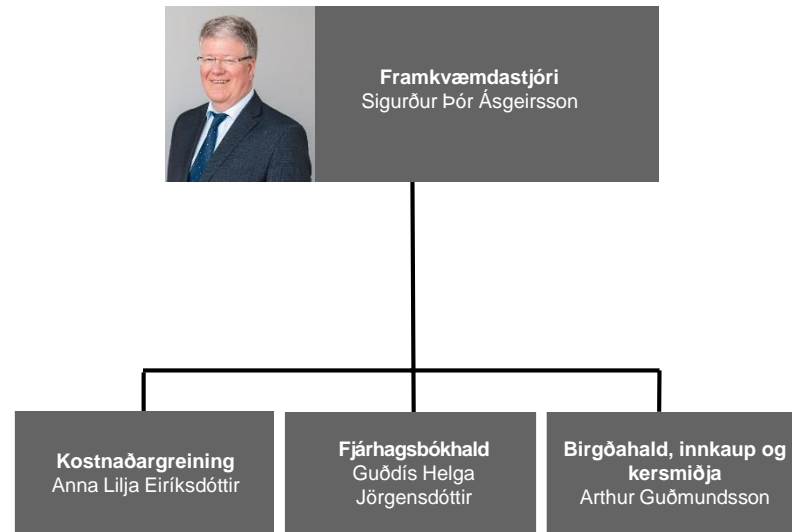


Gaukur Garðarsson  
Viðhaldssvið

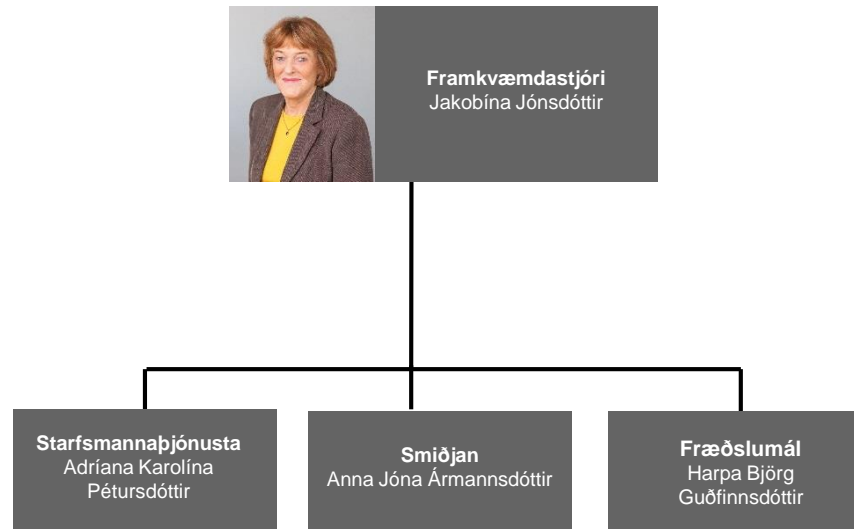


Einar Aron Einarsson  
Rafgreining

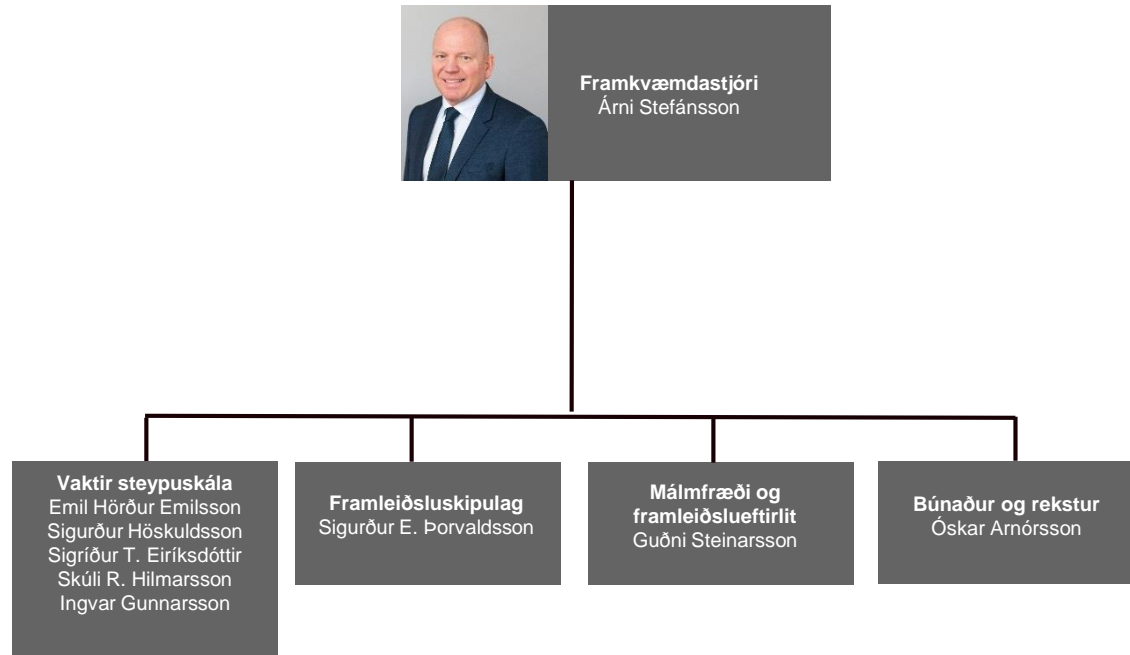
# Fjármálasvið



# Starfsmannasvið



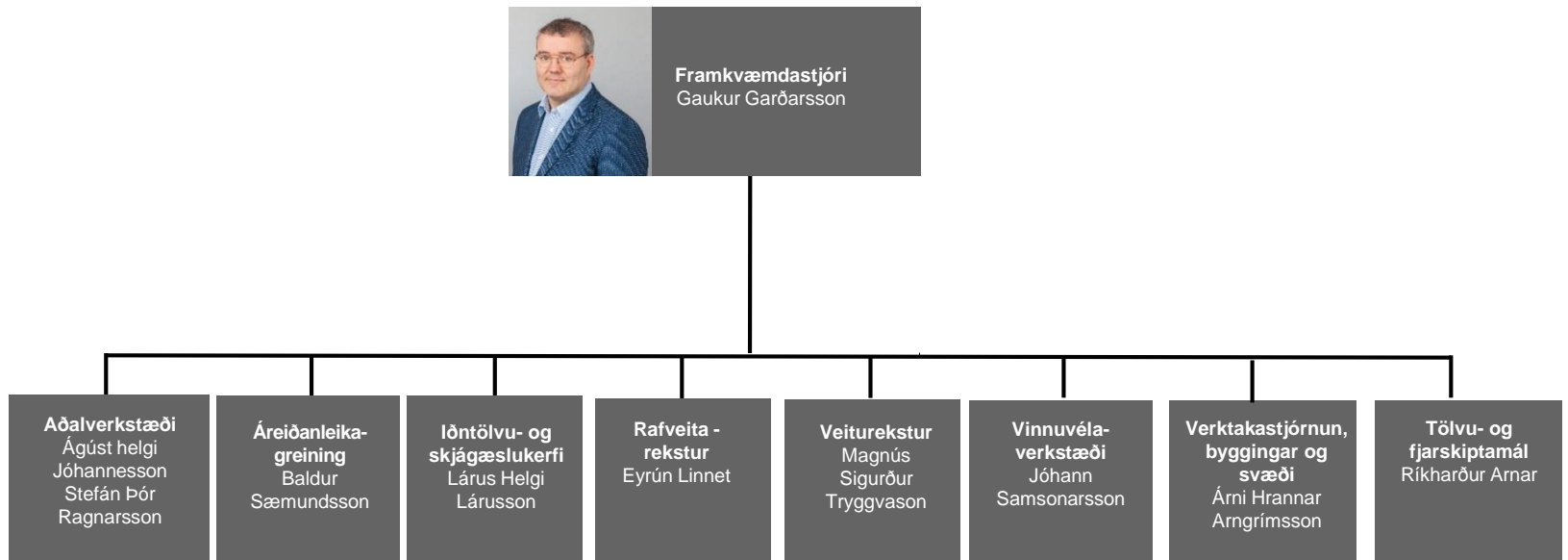
# Steypuskáli



# HSEQ og tækni svið



# Viðhaldssvið





# Rafgreining



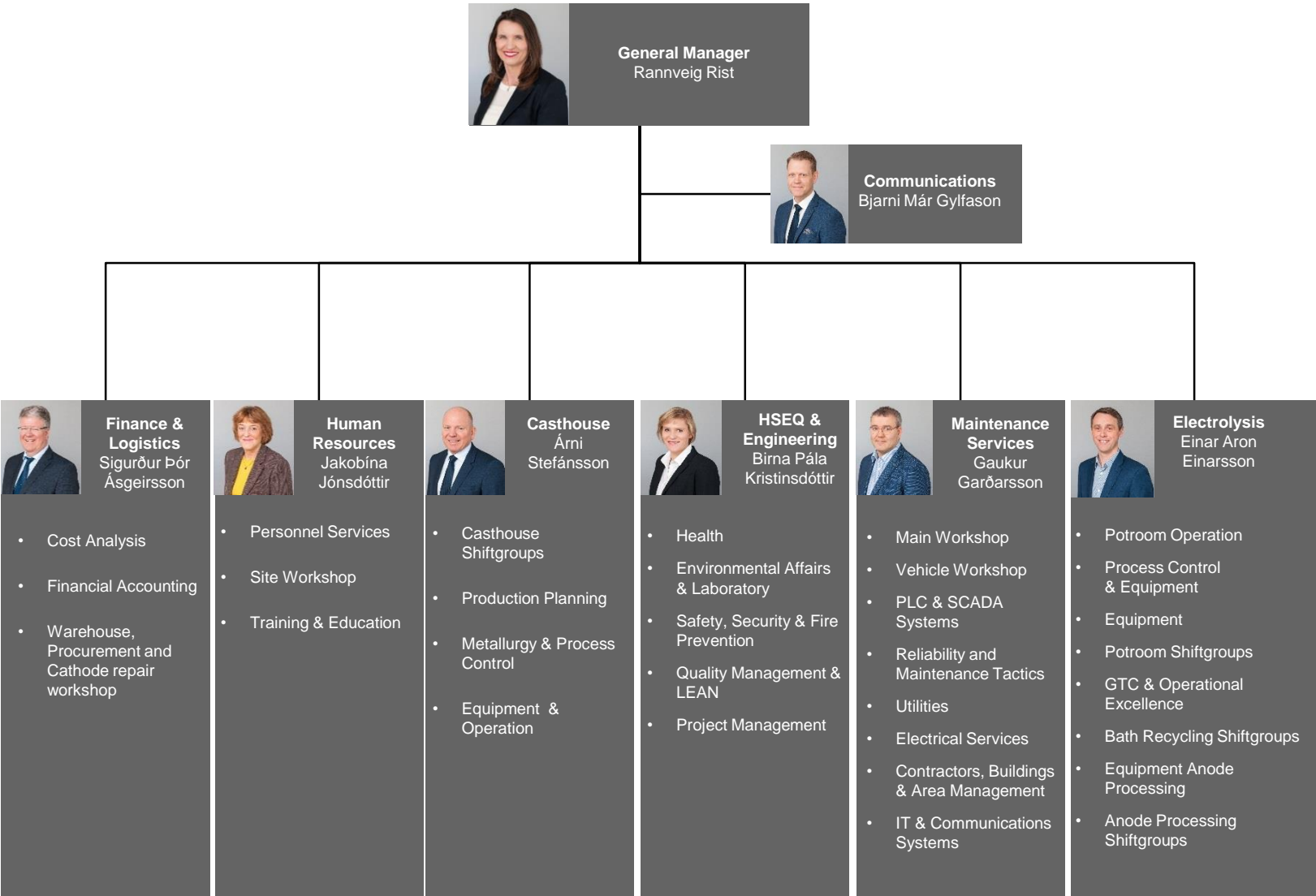
**RioTinto**

Organisational Chart  
Rio Tinto Iceland Ltd.

Effective from June 1<sup>st</sup> 2019



# Rio Tinto Iceland Ltd.



# Senior Management



Rannveig Rist  
General Manager



Sígurður Þór  
Ásgeirsson  
Finance & Logistics



Jakóbína Jónsdóttir  
Human Resources



Árni Stefánsson  
Casthouse



Birna Pála  
Kristinsdóttir  
HSEQ &  
Engineering

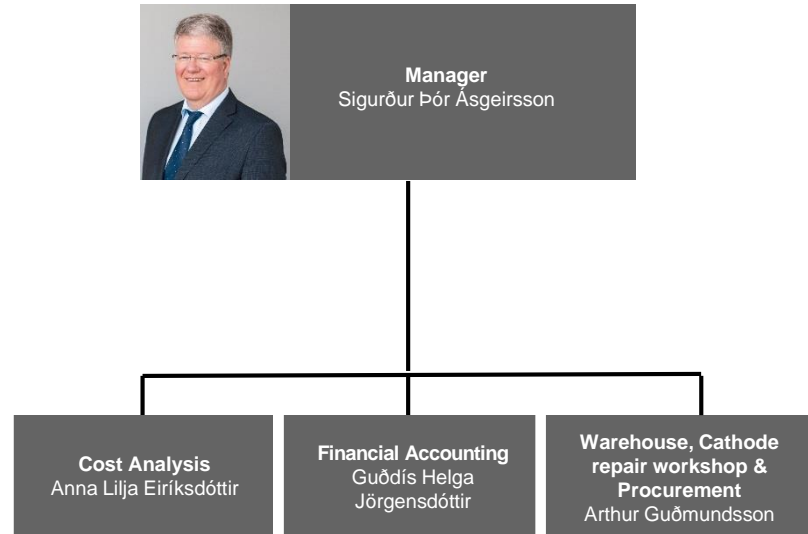


Gaukur  
Garðarsson  
Maintenance  
Services

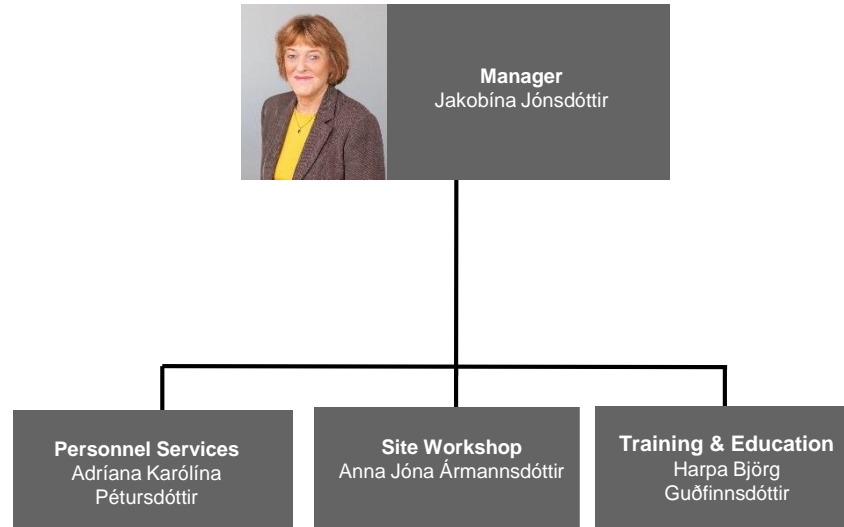


Einar Aron  
Einarsson  
Electrolysis

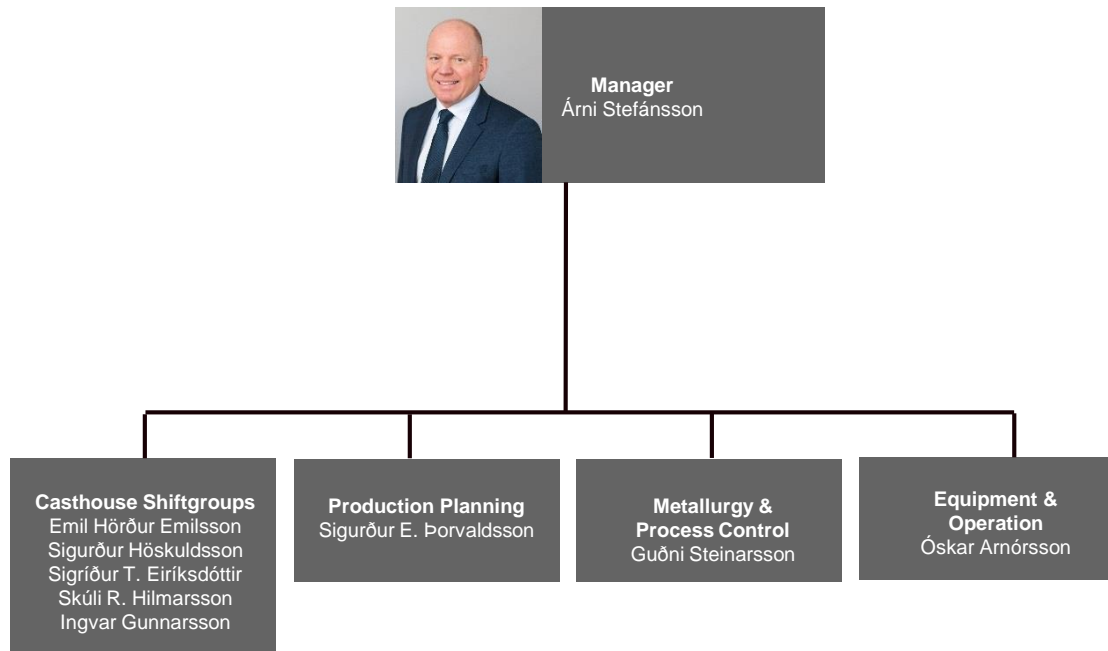
# Finance & Logistics



# Human Resources



# Casthouse

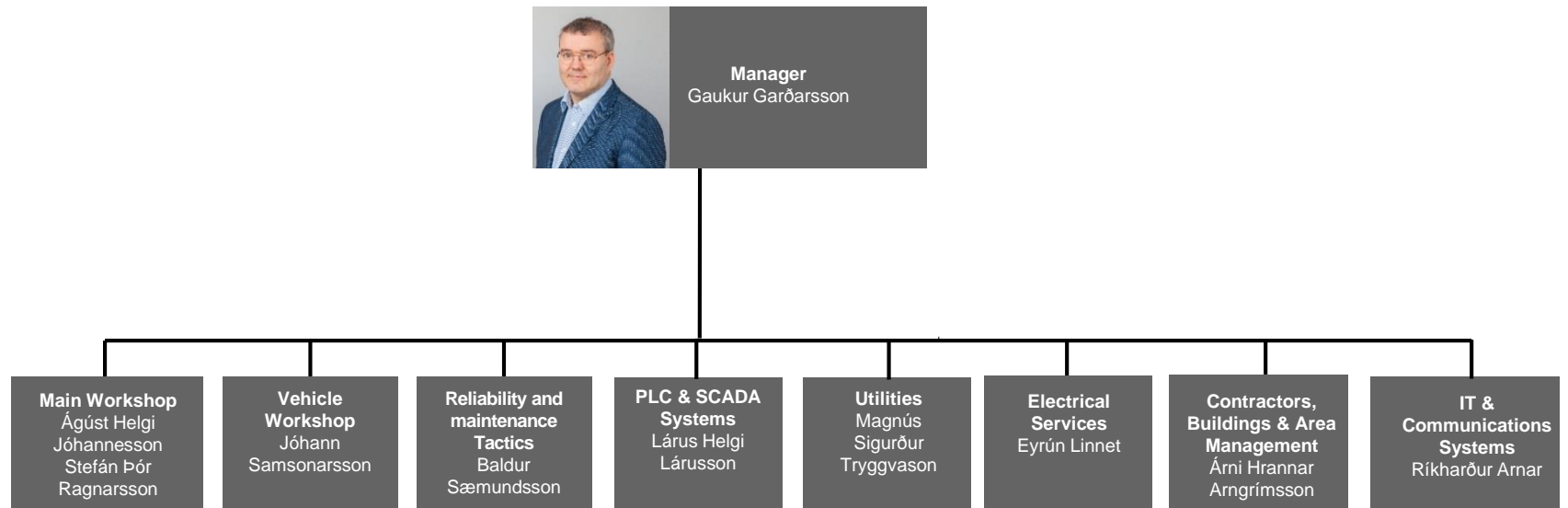


# HSEQ & Engineering





# Maintenance Services



# Electrolysis



**Manager**  
Einar Aron Einarsson

